

Quick Installation Guide Congo Software

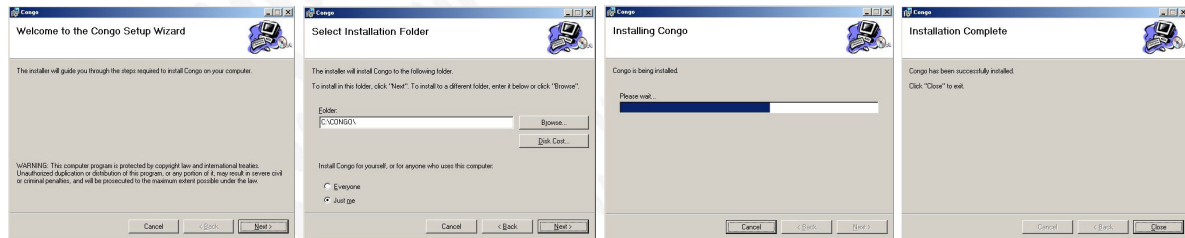
050616 RH

Computer requirements:

- Processor with clock frequency higher than 1.2 GHz is recommended.
- Graphics card with hardware accelerated OpenGL support and 128 MB RAM.
- Windows XP system (SP2 is not required) with 80 MB free disk space.
- A network adaptor is needed to communicate with a Congo Server.

Congo installation:

- Insert the Congo Client CD and execute the Congo.msi file in order to start the Congo installation.
- Select a folder in which the Congo application should be installed.



After the successful installation a new folder called Congo will appear in the Start menu. It includes a shortcuts to start the Congo application.

After you have launched the Congo application the Congo welcome screen appears. Here you can select the different options with the right and left arrow key and confirm with the enter key.

Information about the latest changes and fixes is available in *VersionInfo.htm*. The *Congo Application notes.htm* provide additional information about networking and the Online Help Database. You can find both files in the Congo/Documentation folder and also access this information from within the Congo Browser.

Software protection dongle:

To be able to run the Congo software as a client to the console, you need a Congo dongle, included in the Congo Client Software kit. Congo will run as an offline editor when the dongle is not present.

To use the Congo Client dongle, you must install the dongle driver. This can be found on the Congo Offline/Client Software CD (HASP_User_Setup.zip). Alternately, you can download the latest version at:

ftp://ftp.ealaddin.com/pub/hasp/hl/windows/installed/redistribute/drivers/HASP_User_Setup.zip

Double-click the zip file to extract the installer. Double-click the HASPUserSetup.exe file to run the installer.

If you experience problems during the installation process, please contact ETC technical services at +1 608 831 4116 (Middleton, USA), +49 8024 4700-0 (Holzkirchen, EU), +852 2799 1220 (Hong Kong, Asia).



Corporate Headquarters ■ 3031 Pleasant View Rd, PO Box 620979, Middleton WI 53562 0979 USA ■ Tel +1 608 831 4116 ■ Fax +1 608 836 1736

London, UK ■ Unit 5, Victoria Industrial Estate, Victoria Road, London W3 6UU, UK ■ Tel +44 (0)20 8896 1000 ■ Fax +44 (0)20 8896 2000

Rome, IT ■ Via Ennio Quirino Visconti, 11, 00193 Rome, Italy ■ Tel +39 (06) 32 111 683 ■ Fax +39 (06) 32 656 990

Holzkirchen, DE ■ Ohmstrasse 3, 83607 Holzkirchen, Germany ■ Tel +49 (80 24) 47 00-0 ■ Fax +49 (80 24) 47 00-3 00

Hong Kong ■ Room 605-606, Tower III Enterprise Square, 9 Sheung Yuet Road, Kowloon Bay, Kowloon, Hong Kong ■ Tel +852 2799 1220 ■ Fax +852 2799 9325

Web ■ www.etcconnect.com ■ Copyright © 2005 ETC. All Rights Reserved. All product information and specifications subject to change.